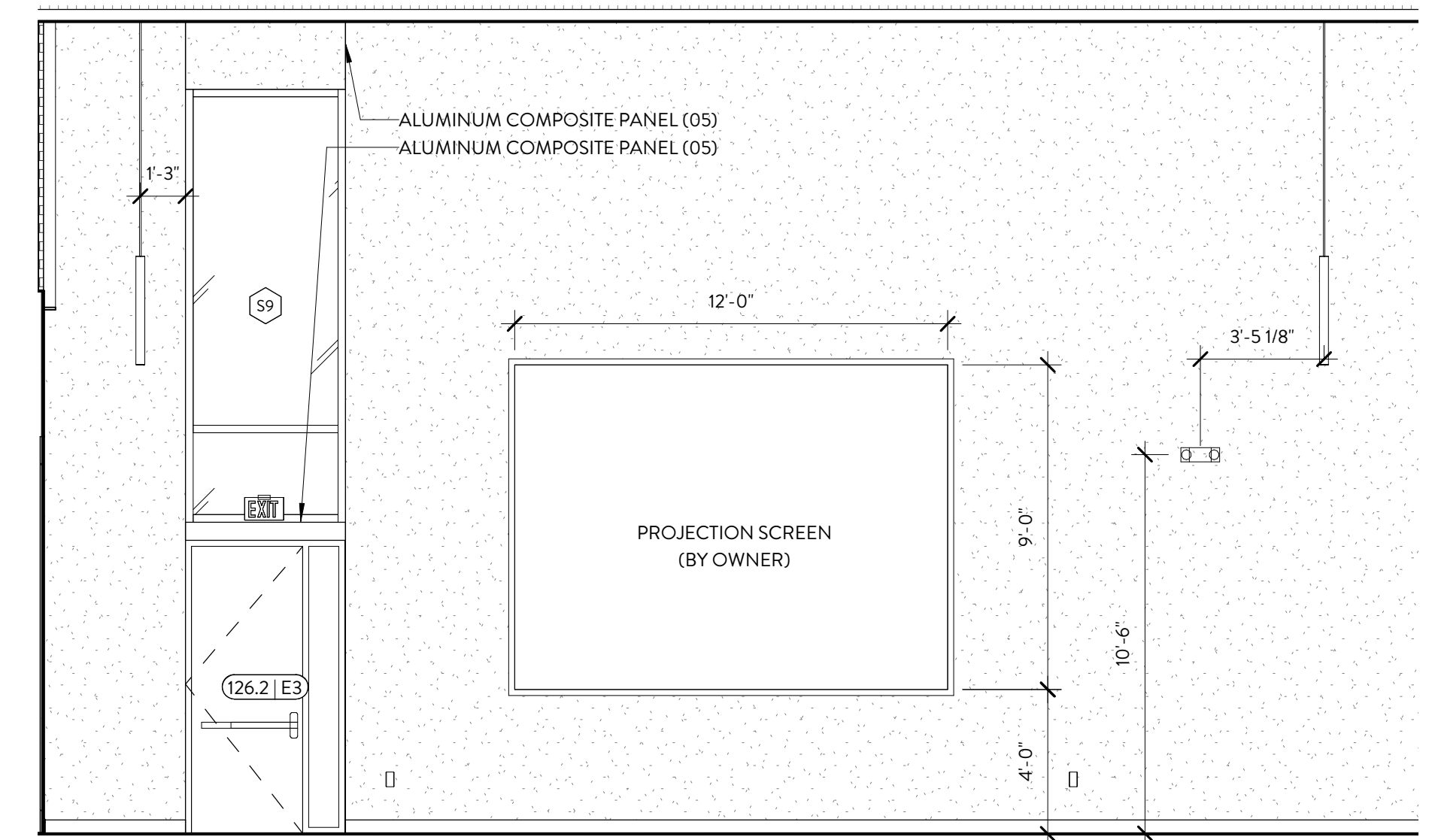
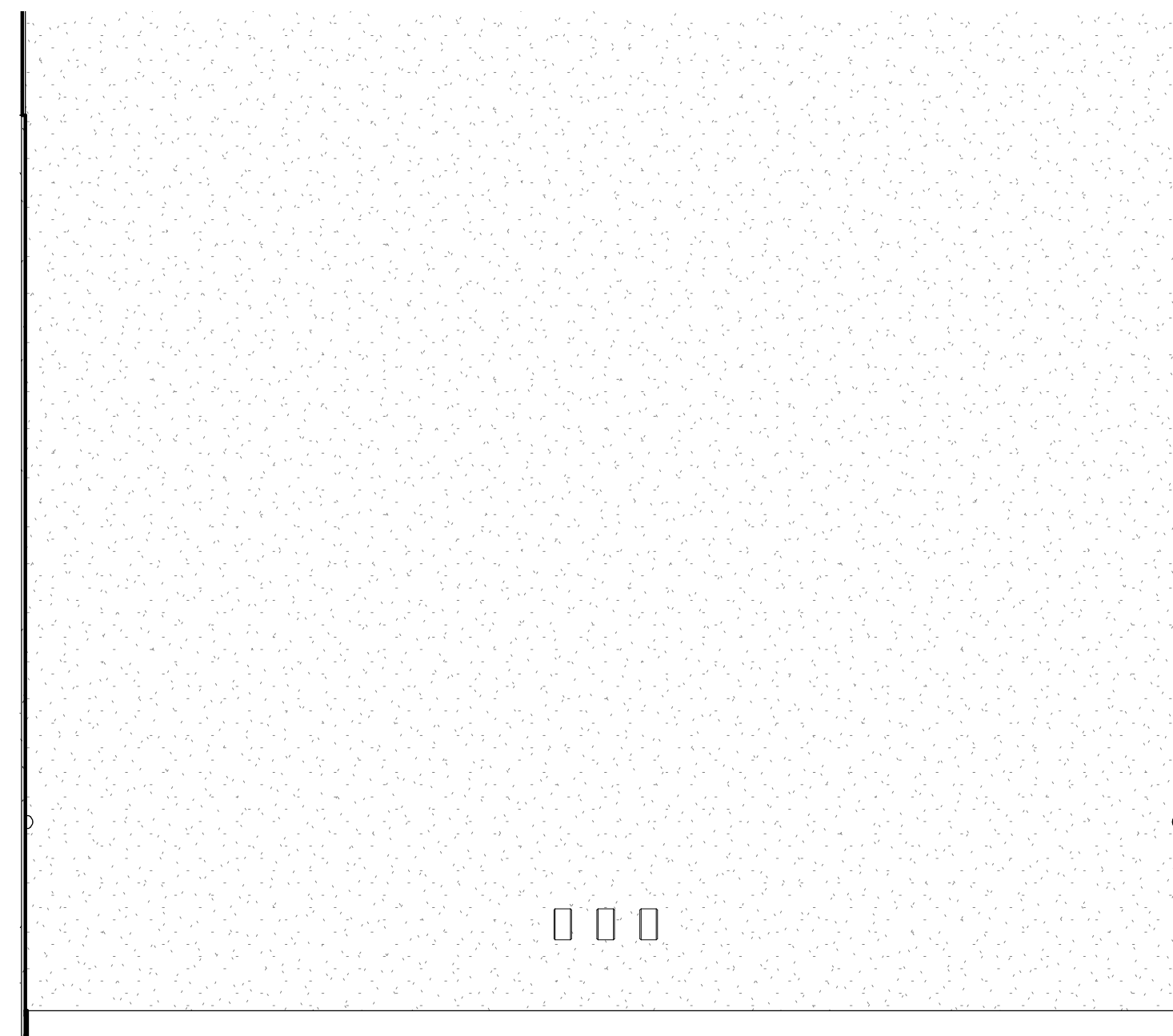


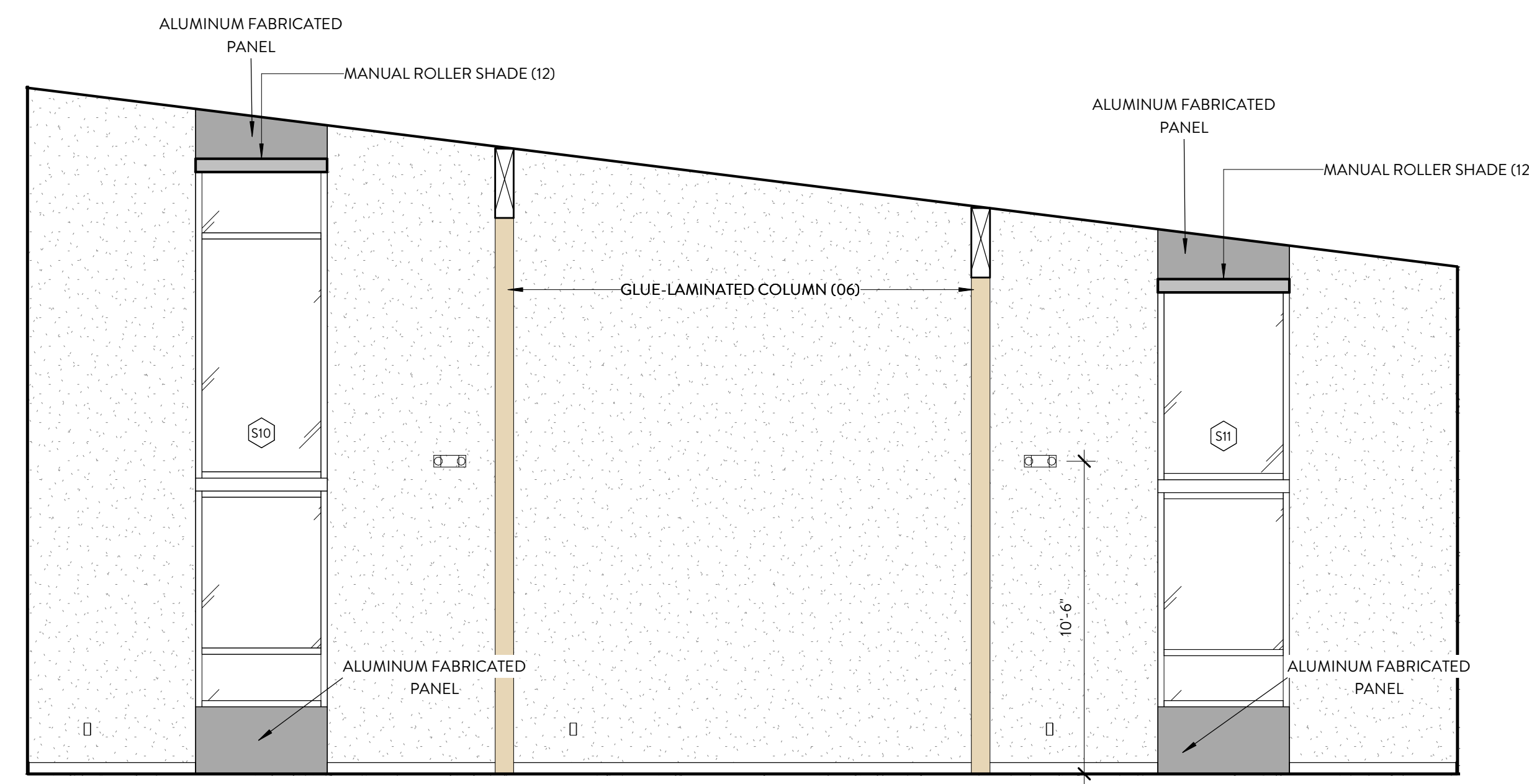
1 TRAINING ROOM
A803 1/4" = 1'-0"



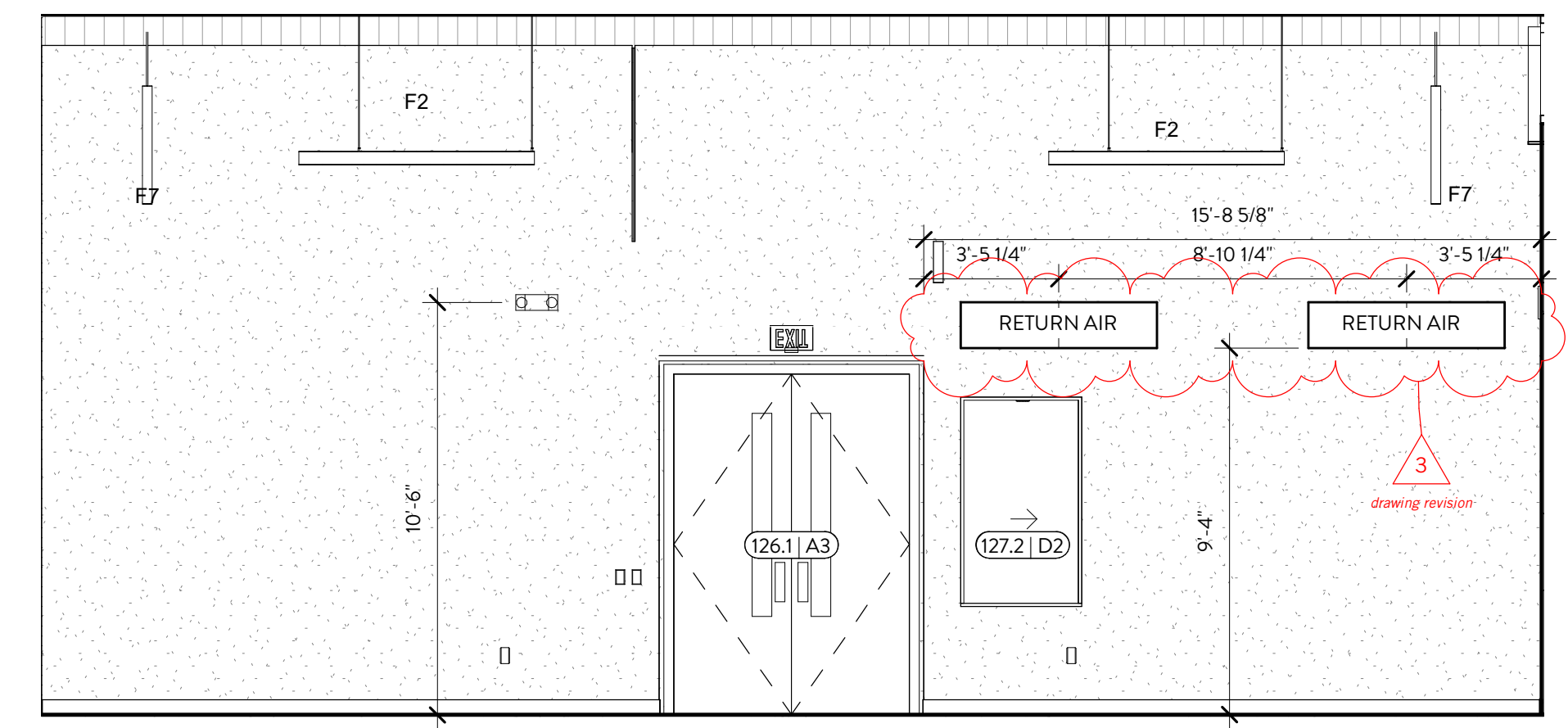
2 TRAINING ROOM
A803 1/4" = 1'-0"



8 MEETING ROOM - WEST
A803 1/2" = 1'-0"



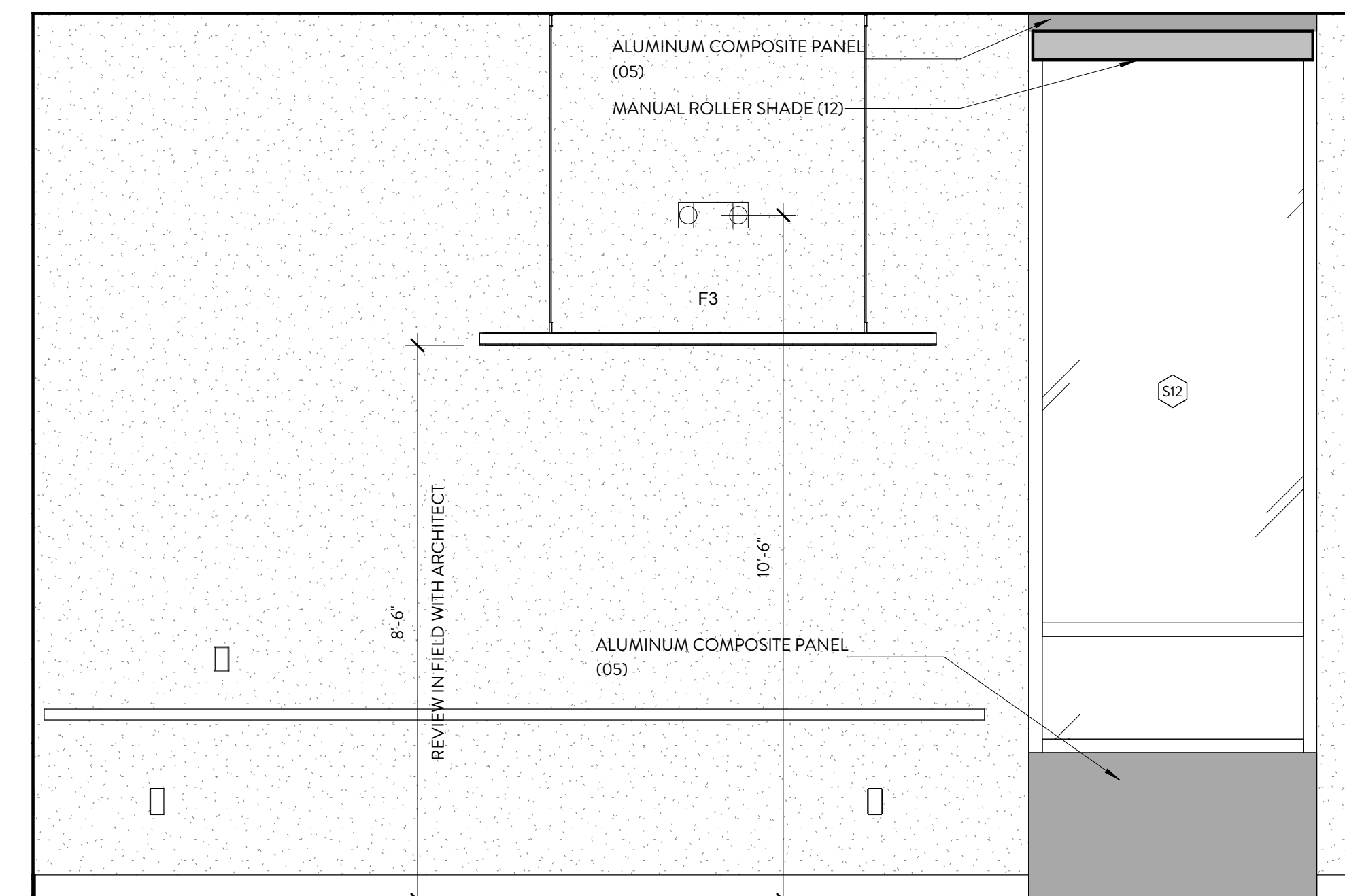
3 TRAINING ROOM
A803 1/4" = 1'-0"



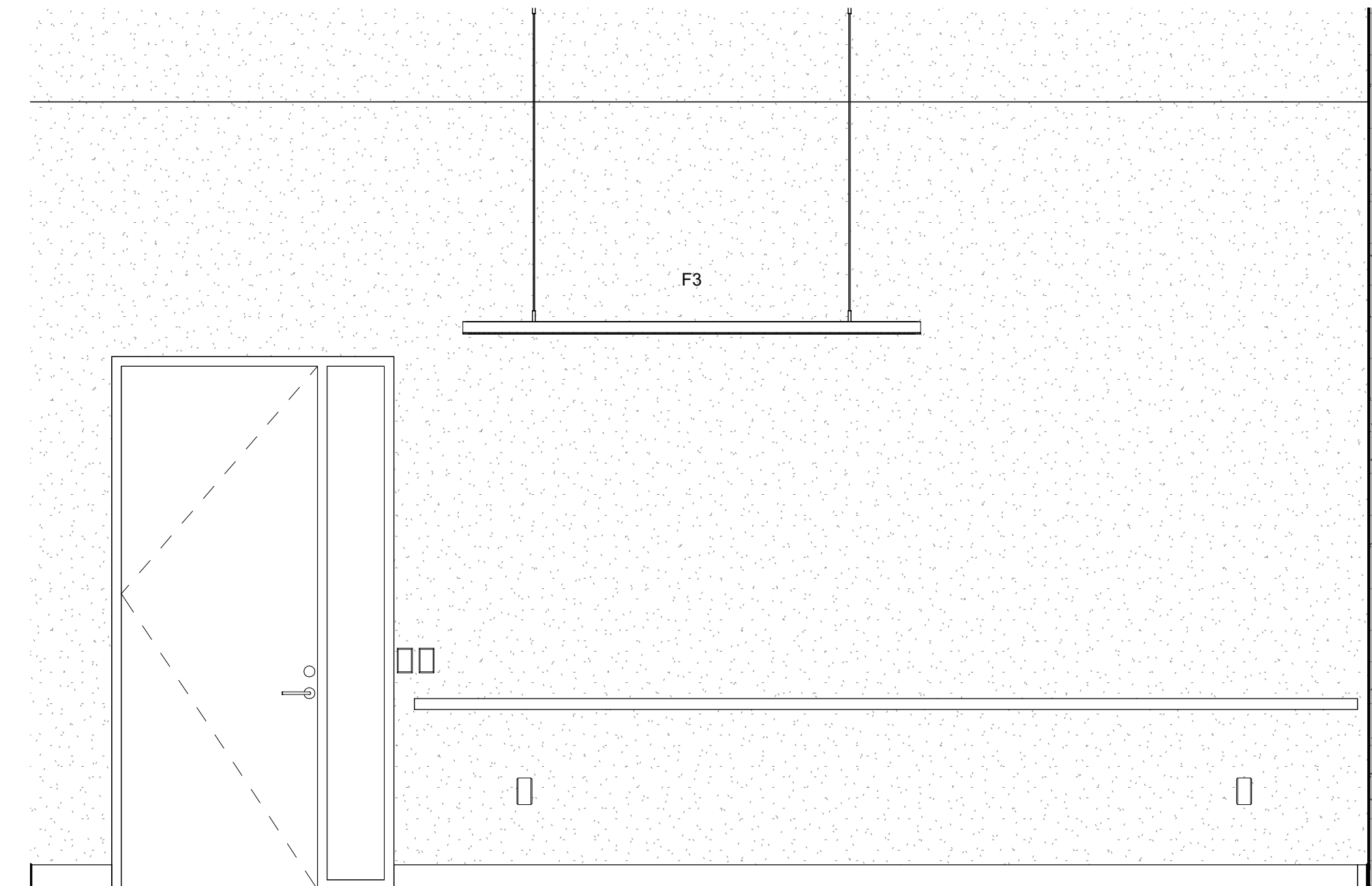
4 TRAINING ROOM
A803 1/4" = 1'-0"



5 MEETING ROOM - EAST
A803 1/2" = 1'-0"

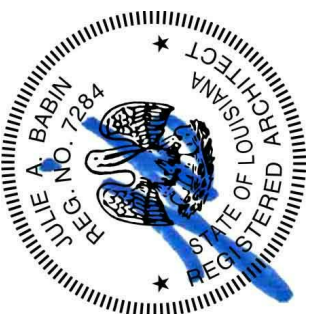


6 MEETING ROOM - NORTH
A803 1/2" = 1'-0"



7 MEETING ROOM - SOUTH
A803 1/2" = 1'-0"

11/4/2019 12:31:51 PM



REVISION #	DATE	ISSUE PURPOSE
3	11/04/2019	ADDENDUM D

CONSTRUCTION DOCUMENTS

INTERIOR - TRAINING + MEETING ROOM

15 OCTOBER 2019

A803