

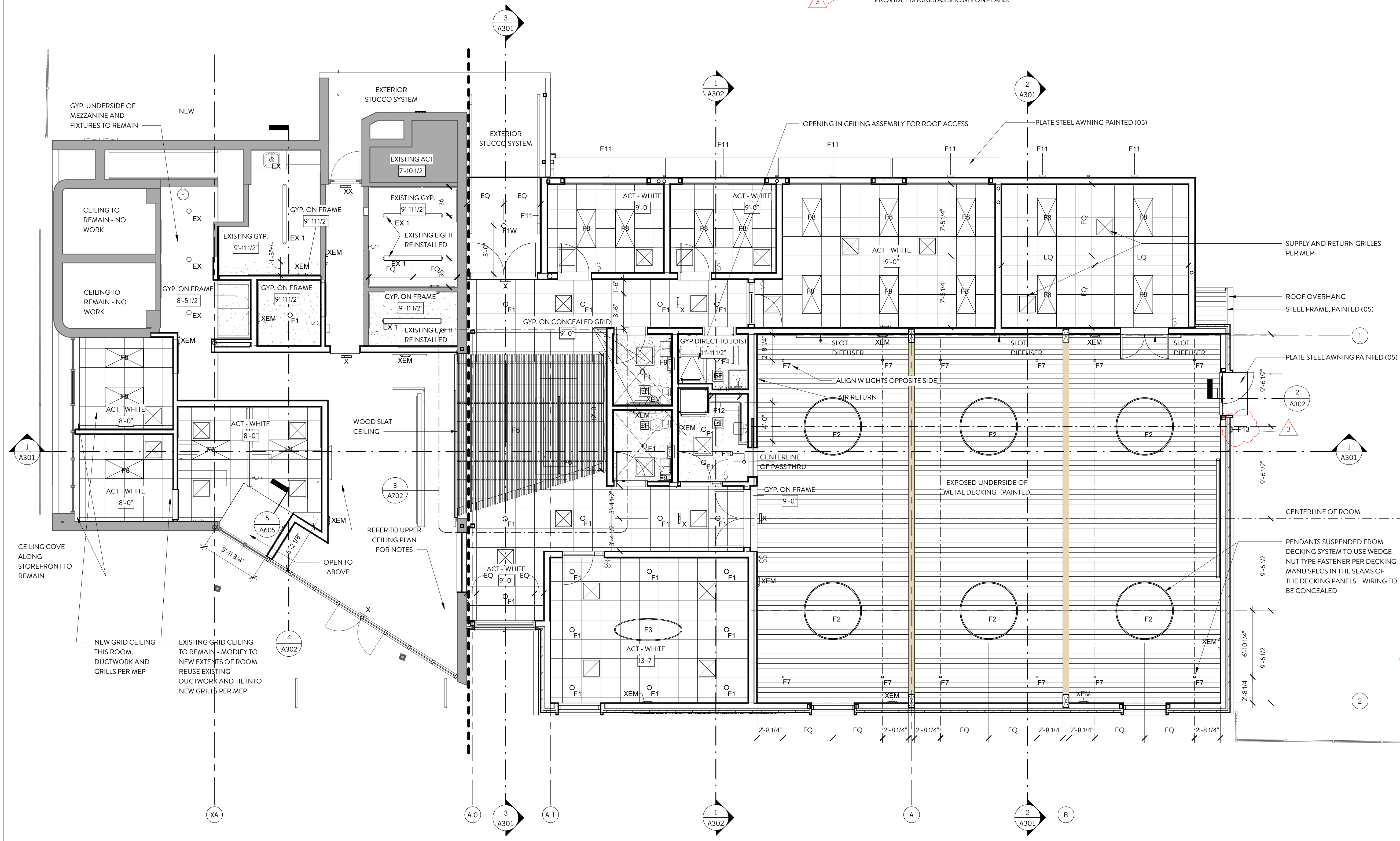
LIGHTING SCHEDULE

TYPE	Count	DESCRIPTION	MODEL	MANUFACTURER	LAMP	COMMENTS
F1	38	RECESSED MONO POINT	6" SPECULAR CLEAR TRIM - RECESSED	HALO	LED	
FIW	1	RECESSED MONOPOINT	6" SPECULAR CLEAR TRIM WET RATED	HALO	LED	
F2	7	5" DIAMETER PENDANT	P1063-60	CAMMAN	LED	
F3	1	ELLIPSE PENDANT	95 9050	BETACALCO	LED	
F6	2	LINEAR FLUSH LENS	SEEM 4	FOCAL POINT	LED	FLUSH IN WOOD CEILING
F7	12	PENDANT TUBE LIGHT	RICP49423	RICCA DESIGN	LED	
F8	19	RECESSED TROFFER	ENCOUNTER TROFFER 24" x 48"	METALUX	LED	CEILING LAY IN
F9	4	VANITY SCONCE	25" SLIM NIGHTSTICK LED BATH BAR	dweLED	LED	BRUSHED ALUMINUM
FI0	1	RECESSED MONO POINT	JUNO SOLO TASK LED	JUNO	LED	
FI1	7	EXTERIOR STEP LIGHT	838 LED STEP LIGHT	JUNO	LED	
FI2	2	UNDERCABINET LED LIGHT	HU10	EATON	LED	LENGTHS PER RCP
FI3	1	UP AND DOWN SCONCE	ASPEN1 20	TECH LIGHTING	LED	

① FIXTURE COUNT IS AUTOMATICALLY INCLUDED IN OUR SOFTWARE AND PROVIDED FOR CONVENIENCE ONLY. CONTRACTOR REQUIRED TO PROVIDE FIXTURES AS SHOWN ON PLANS.

GENERAL POWER + RCP NOTES

- ALL CEILING HEIGHTS TAGGED ARE FROM THE FINISHED FLOOR.
- CONSULT WITH ARCHITECT REGARDING THE PLACEMENT OF FIXTURES IF UNCLEAR BASED ON THE DRAWINGS.
- PROVIDE MOISTURE RESISTANT GYPSUM BOARD CEILINGS IN BATHROOMS AND ALL OTHER WET AREAS.
- ALL CONDUIT SHALL BE CONCEALED UNLESS NOTED OTHERWISE.
- PROVIDE ALL MULTIPLE WALL MOUNTED SWITCHES WITH A SINGLE COVERPLATE.
- ALL LOW-VOLTAGE LIGHTING AND AV SYSTEMS CONTROLS AND PROGRAMMING SHALL BE COORDINATED WITH OWNER PRIOR TO COMPLETION OF WORK.
- EXISTING DUCTWORK + GRILLES AT EXISTING BUILDING TO BE REPLACED IN KIND.
- ALL EXISTING LIGHTING FIXTURES TO REMAIN SHALL RECEIVE NEW LAMPS.
- SEE ELECTRICAL PLANS FOR LOW VOLTAGE LANDSCAPE LIGHTING.
- WHERE THERE IS ANY DISCREPANCY BETWEEN ELECTRICAL AND ARCHITECTURAL DRAWINGS, CONTACT ARCHITECT FOR CLARIFICATION. ALL FIXTURES, WHETHER SHOWN IN ELECTRICAL OR ARCHITECTURAL, SHALL BE INCLUDED IN SCOPE OF WORK.



1 GROUND FLOOR - RCP
A701 3/16" = 1'-0"

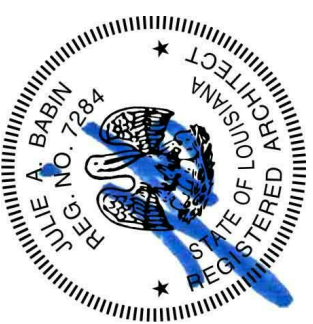
STANDARD MOUNTING HEIGHTS

- 42" SWITCHES (CENTERLINE)
- 18" RECEPTACLES
- 72" PANEL BOARDS
- 42" RECEPTACLES ABOVE COUNTERS
- 24" EXTERIOR RECEPTACLES
- 18" TELEPHONE | DATA OUTLETS
- 42" THERMOSTATS

NOTE: HEIGHTS ARE TYPICAL UNLESS OTHERWISE NOTED. HEIGHTS MEASURED FROM TOP OF FINISHED FLOOR. FOR EXTERIOR RECEPTACLES WHERE UNCLEAR, REVIEW W ARCHITECT

LOCATE ALL SWITCHES 6" OC OF ADJACENT DOOR JAMB, UNLESS OTHERWISE NOTED

NOTE: See Electrical plans for Lighting and Power Information.



REVISION #	DATE	ISSUE PURPOSE
3	11/04/2019	Addendum D

11/4/2019 11:57:48 AM